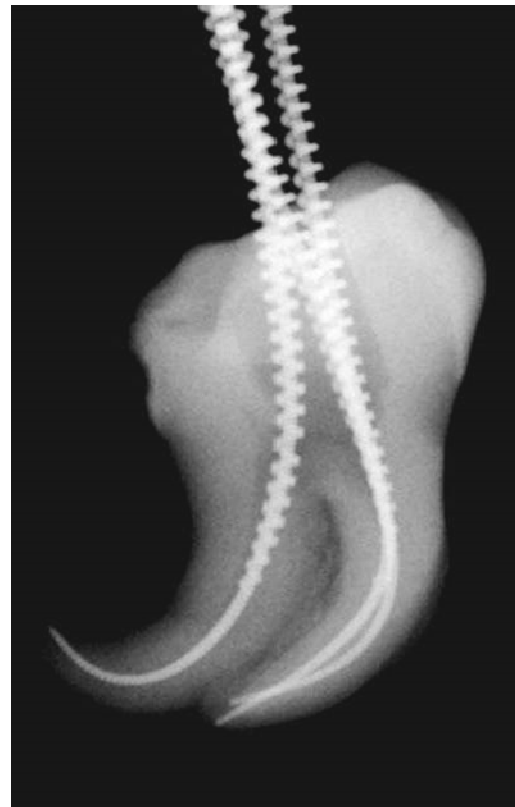
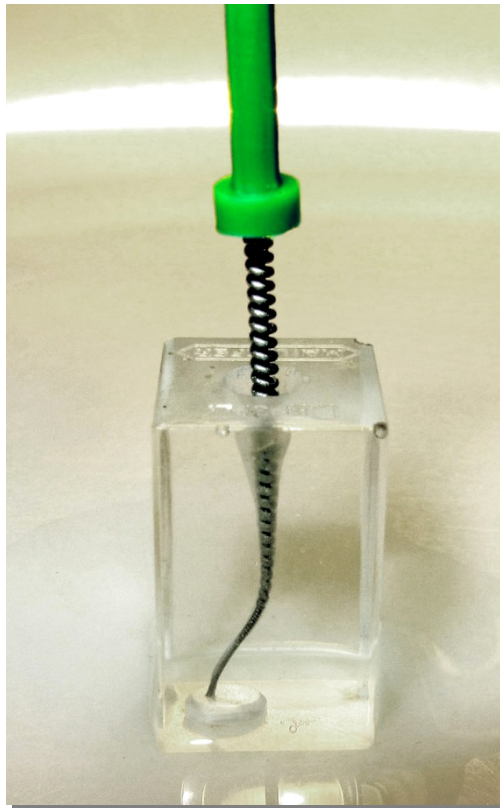




Innovative revolutionary approach to root canal preparation



**MEDICNRG**  
Precise Endo Technology



We recommend: always irrigate between files. The Gentlefiles operate inside the canal at 6000 rpm by pecking motion and create the spiral effect ([see video on gentlefile.com](http://gentlefile.com)) activating the anti-bacterial agents . The spiral effect of the file also improves the cleaning of the canal wall therefore help to open the approach to the lateral canals . [See next slide](#)

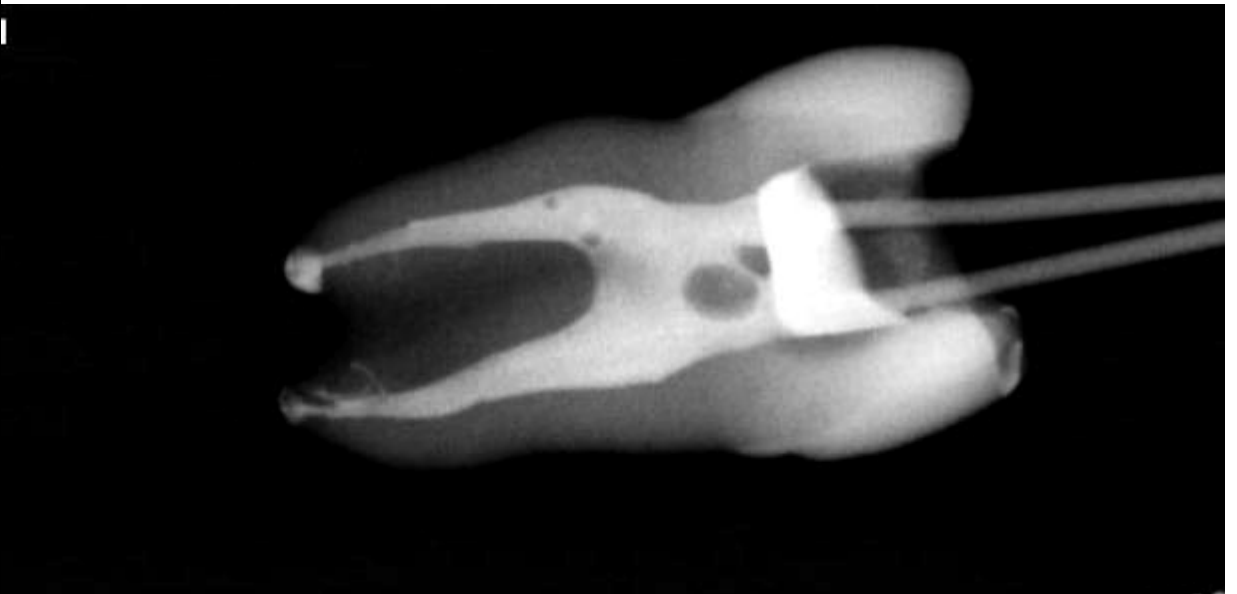


# Gentlefile®

Three-dimensional obturation of the apical delta and lateral canals due to the perfect cleaning ability of the Gentlefile .



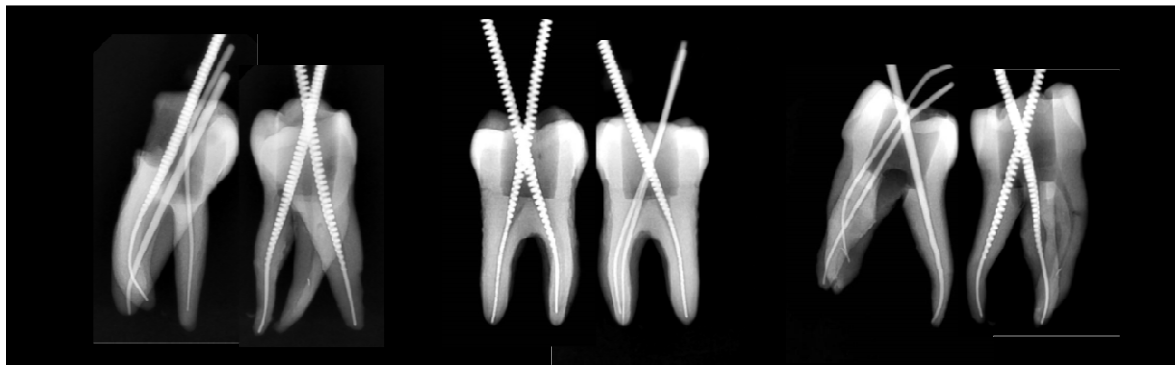
Obturation of the canal using lateral condensation with Gutta Percha and sealer





## The promise

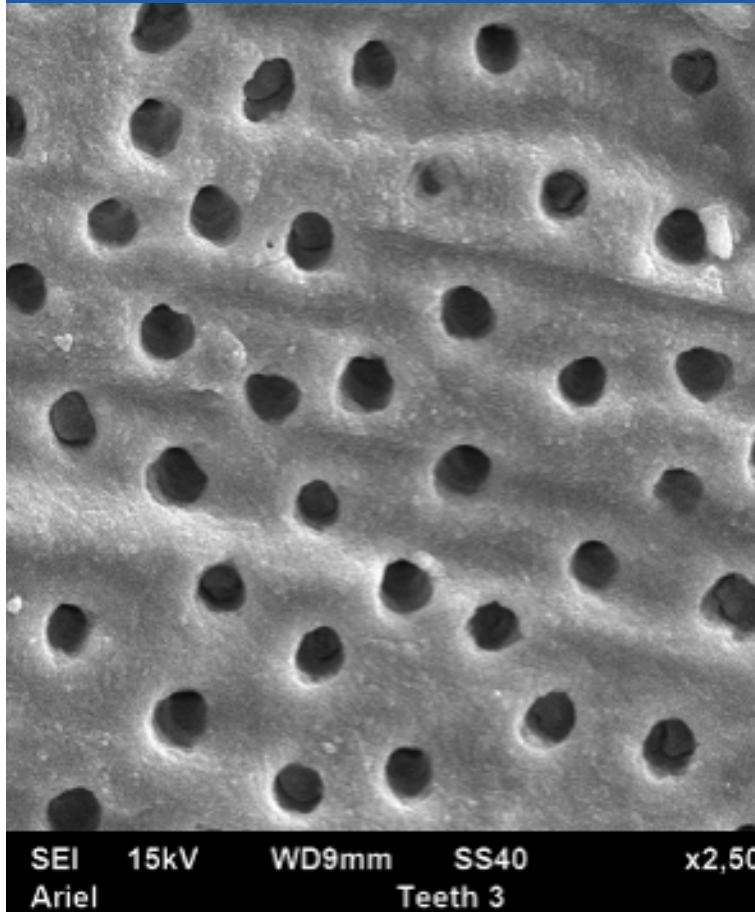
- ❖ Maintaining the anatomic structure of the canal
- ❖ Symmetric removal of the dentine layer
- ❖ Filing the canal walls rather than drilling and cutting the dentine as NiTi does
- ❖ Activation of the irrigating solutions throughout the process
- ❖ Preparation and Cleaning of canals with irregular cross-sections



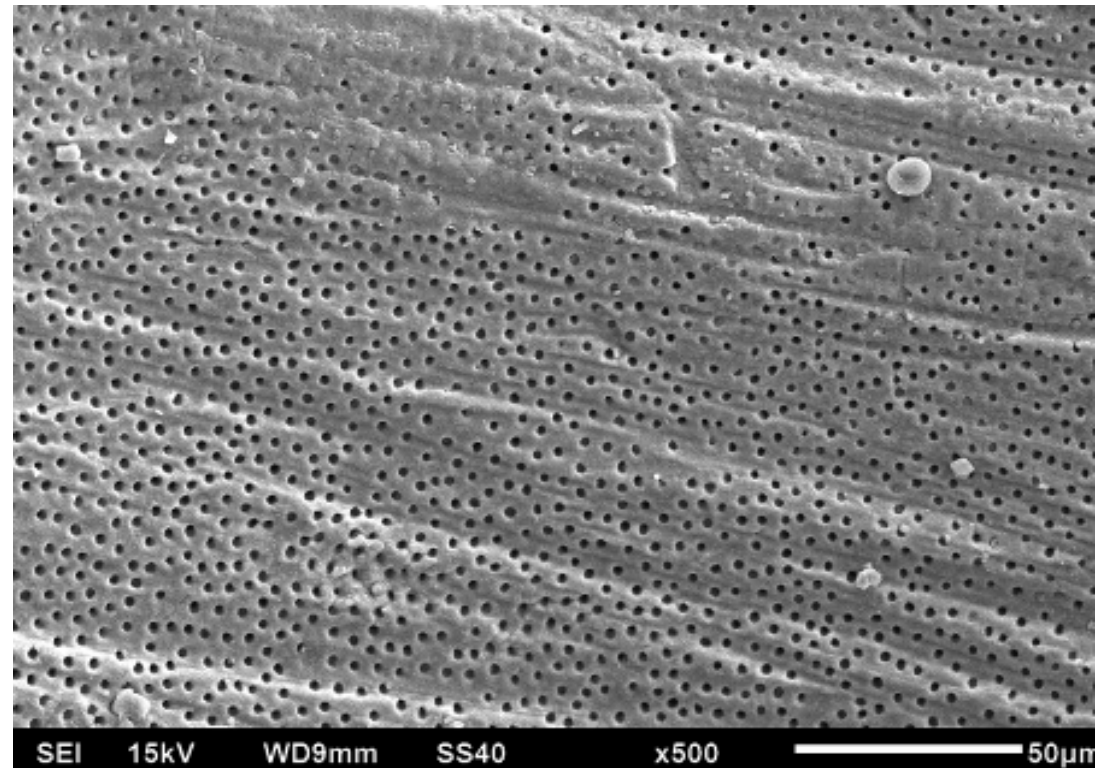


## Surface after treatment - The Coronal Third

Surface after treatment with the **Gentlefile** and rinsing with anti-bacterial agents



Enlargement: X 2500



Enlargement: X 500

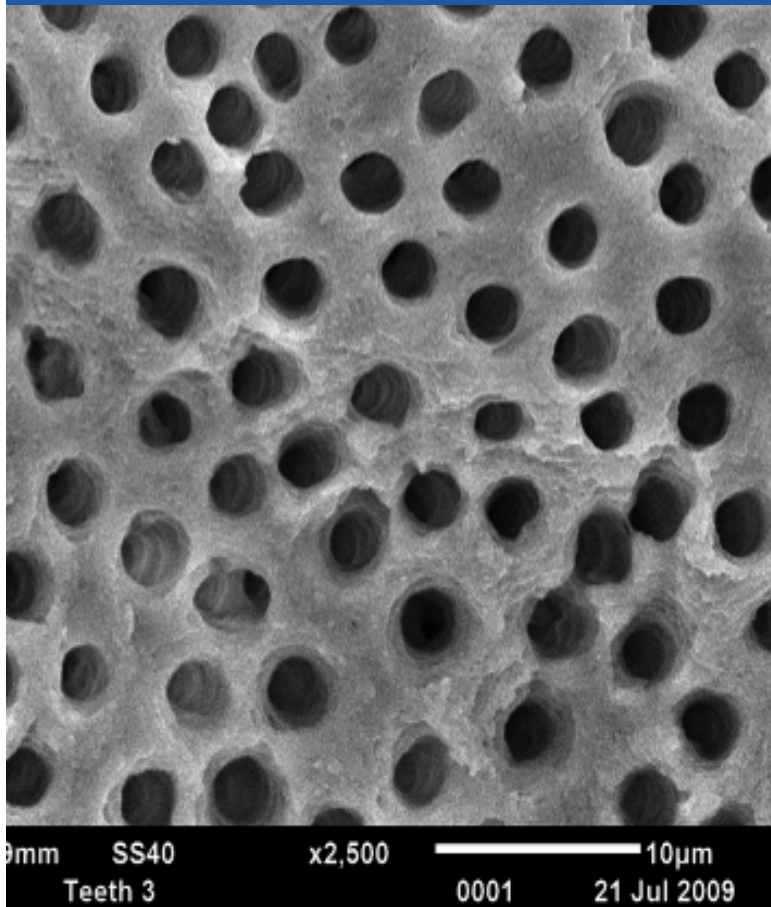
**MEDICNRG**  
Precise Endo Technology



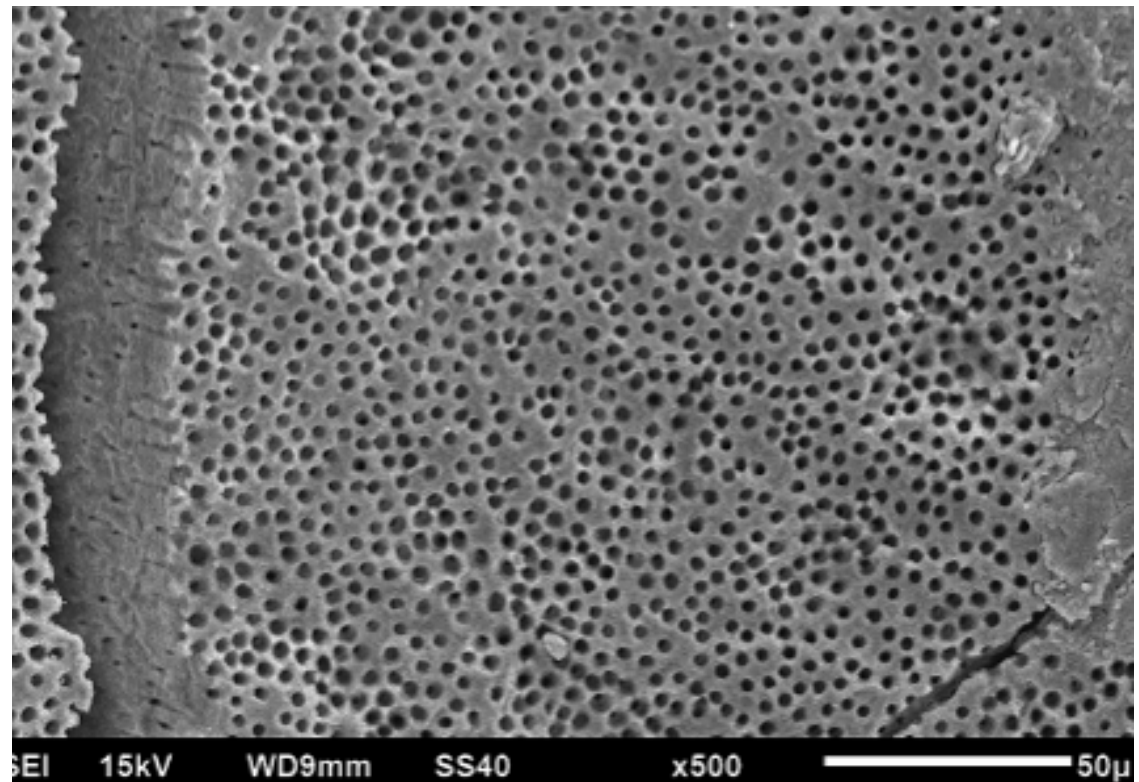


## Surface after treatment - The Middle Third

Surface after treatment with the **Gentlefile** and rinsing with anti-bacterial agents



Enlargement: X 2500

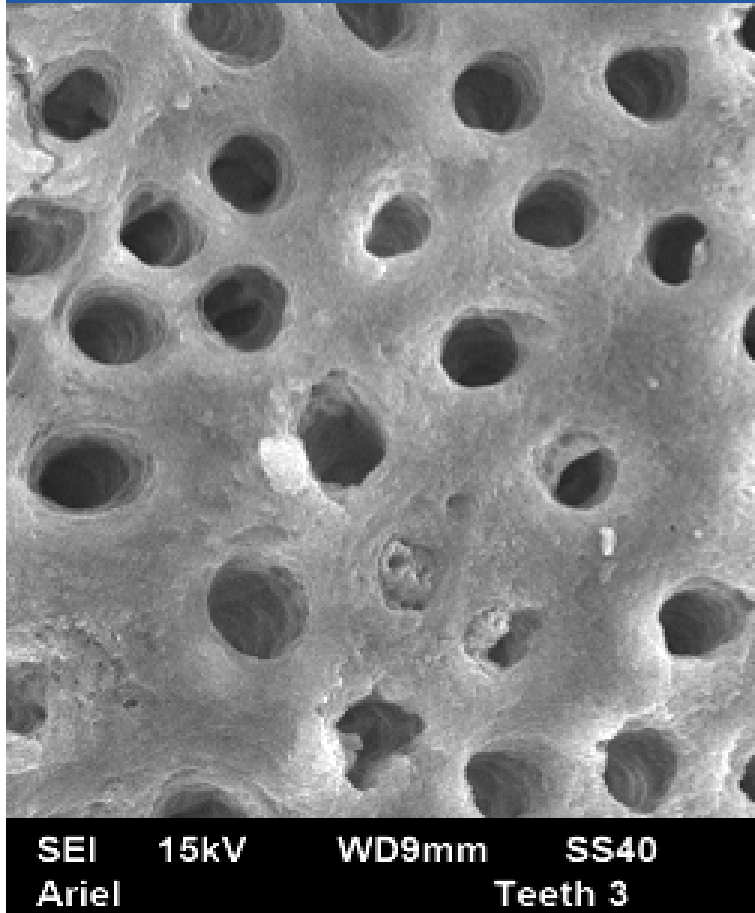


Enlargement: X 500

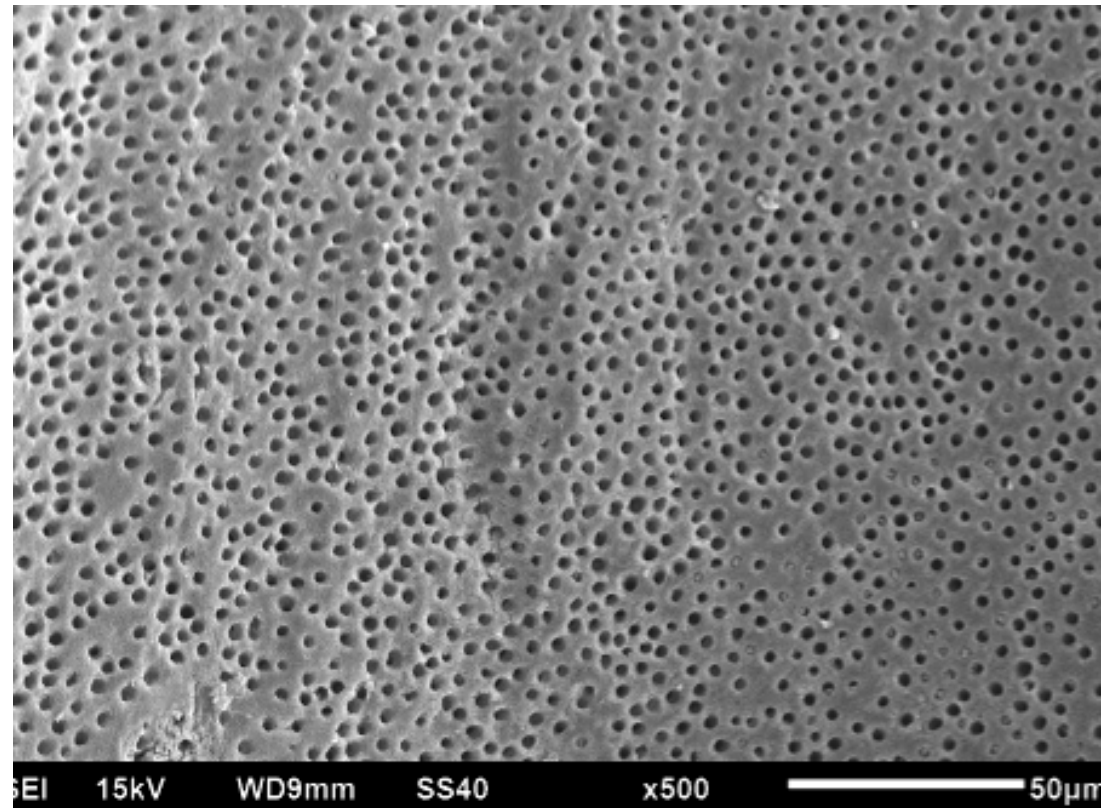


## Surface after treatment - The Apical Region

This region is the most difficult to reach and problematic for preparation.



Enlargement: X 2500



Enlargement: X 500

**MEDICNRG**  
Precise Endo Technology



Smile with Gentlefile

**MEDICOR**  
Precise Endo Technology